



**DEEP CYCLE**  
**SERIES: 4000**  
**MODEL: S-460**

**BATTERY ENGINEERING**  
**WWW.ROLLSBATTERY.COM MADE IN CANADA**

**BATTERY TYPE: 6 VOLTS**

**DIMENSIONS:**

<b>LENGTH</b>	318 MM	12 1/2 INCHES
<b>WIDTH</b>	181 MM	7 1/8 INCHES
<b>HEIGHT</b>	425 MM	16 3/4 INCHES

**WEIGHTS:**

<b>WEIGHT DRY</b>	35 KG	78 LBS.
<b>WEIGHT WET</b>	49 KG	108 LBS.

**CONTAINER CONSTRUCTION:**

**CONTAINER:** HIGH DENSITY POLYPROPYLENE  
**COVER:** HIGH DENSITY POLYPROPYLENE

**TERMINALS:** FLAG TERMINAL  
**HANDLES:** ROPE

**PLATES:**

**POSITIVE PLATE DIMENSION:**

<b>HEIGHT</b>	273 MM	10.750 INCHES
<b>WIDTH</b>	143 MM	5.625 INCHES
<b>THICKNESS</b>	4.32 MM	0.170 INCHES

**CELLS:** 3  
**PLATES/CELL:** 15

**NEGATIVE PLATE DIMENSION:**

<b>HEIGHT</b>	273 MM	10.750 INCHES
<b>WIDTH</b>	143 MM	5.625 INCHES
<b>THICKNESS</b>	3.05 MM	0.120 INCHES

**SEPARATOR THICKNESS:** 2 MM 0.061 INCHES  
**INSULATION GLASS MAT:** 1 MM 0.020 INCHES

**CAPACITY:**

**CRANK AMPS:**  
**COLD (CCA)** 0°F / -17.8°C 1066  
**MARINE (MCA)** 32°F / 0°C 1333

**ELECTROLYTE RESERVE:**  
**ABOVE PLATES** 57 MM 2.25 INCHES  
**RESERVE CAPACITY:**  
**RC @ 25A** 761 MINUTES

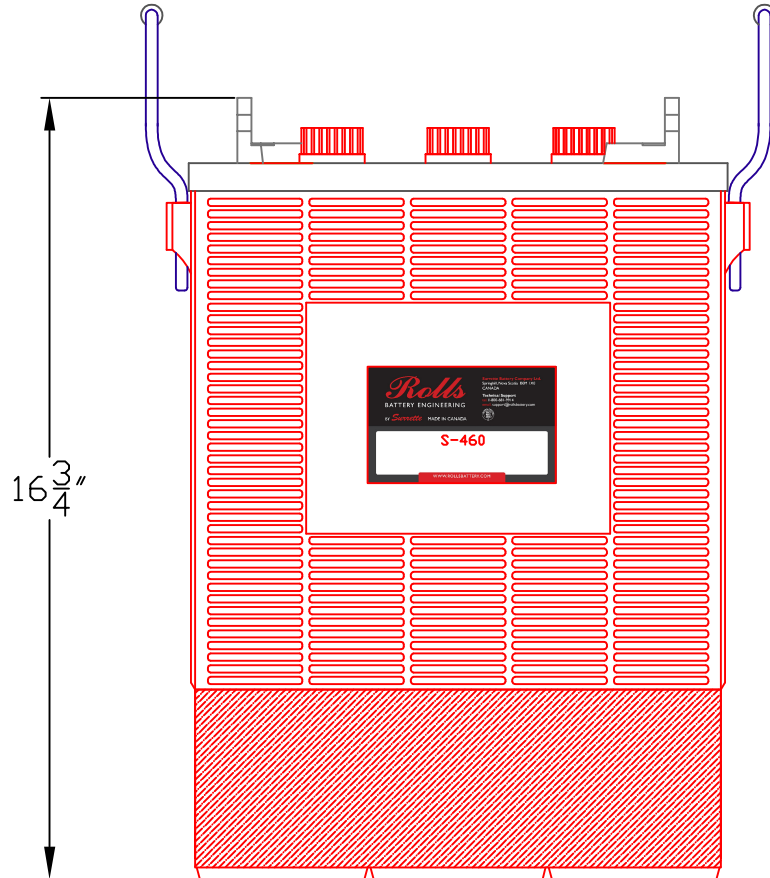
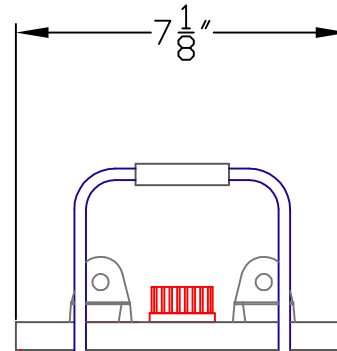
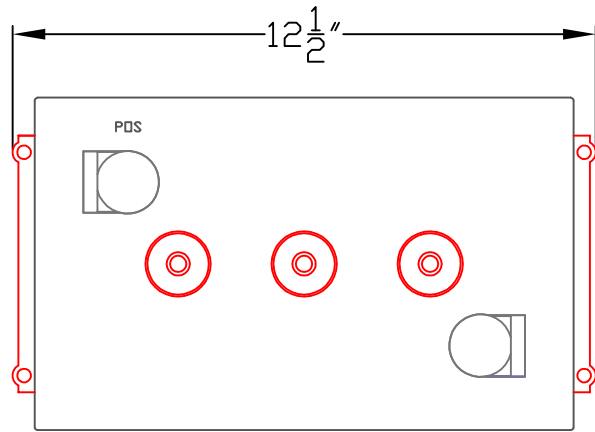
**20 HR RATE: 350**

	<b>HOUR RATE</b>	<b>SPECIFIC GRAVITY</b>	<b>CAP / AH</b>	<b>CURRENT / AMPS</b>
CAPACITY @	100 HOUR RATE	1.280 SP. GR.	466	4.66
CAPACITY @	72 HOUR RATE	1.280 SP. GR.	441	6.13
CAPACITY @	50 HOUR RATE	1.280 SP. GR.	417	8.33
CAPACITY @	24 HOUR RATE	1.280 SP. GR.	361	15.0
<b>CAPACITY @</b>	<b>20 HOUR RATE</b>	<b>1.280 SP. GR.</b>	<b>350</b>	<b>17.5</b>
CAPACITY @	15 HOUR RATE	1.280 SP. GR.	329	21.9
CAPACITY @	12 HOUR RATE	1.280 SP. GR.	312	26.0
CAPACITY @	10 HOUR RATE	1.280 SP. GR.	298	29.8
CAPACITY @	8 HOUR RATE	1.280 SP. GR.	280	35.0
CAPACITY @	6 HOUR RATE	1.280 SP. GR.	259	43.2
CAPACITY @	5 HOUR RATE	1.280 SP. GR.	245	49
CAPACITY @	4 HOUR RATE	1.280 SP. GR.	228	57
CAPACITY @	3 HOUR RATE	1.280 SP. GR.	207	69
CAPACITY @	2 HOUR RATE	1.280 SP. GR.	179	89
CAPACITY @	1 HOUR RATE	1.280 SP. GR.	126	126



I STATION RD SPRINGHILL, NOVA SCOTIA CANADA B0M 1X0 1.800.681.9914

REV.2  
 Jan-10  
 S-460



PART NUMBER: S460

WEIGHT WET: 108 LB / 49 KG

WET DRY: 78 LB / 35 KG

CAPACITY 350 AH 20HR RATE

VOLTAGE: 6 V

OVERALL DIMENSIONS: 12 1/2 X 7 1/8 X 16 3/4 "



MAX HEIGHT WITH OPTIONAL HYDROCAPS 17.41"

**Rolls**  
BATTERY ENGINEERING

TITLE:  
S460

DESCRIPTION:  
6V DEEP CYCLE SOLAR SERIES 400/4000

CONTACT INFO:

WEB: WWW.ROLLSBATTERY.COM  
E-MAIL: SALES@ROLLSBATTERY.COM  
PHONE: 1-800-681-9914

SCALE: 1" = 4" JPEG:  
8.5" X 11" NOT TO SCALE

Drawn by: P. FERRON Approved By: JD SURRETTE

DATE: JAN-2010 REVISION 2

DRAWING NO.: DWG 033, BD-S460