

High-efficiency photovoltaic module using silicon nitride multicrystalline silicon cells.

### Performance

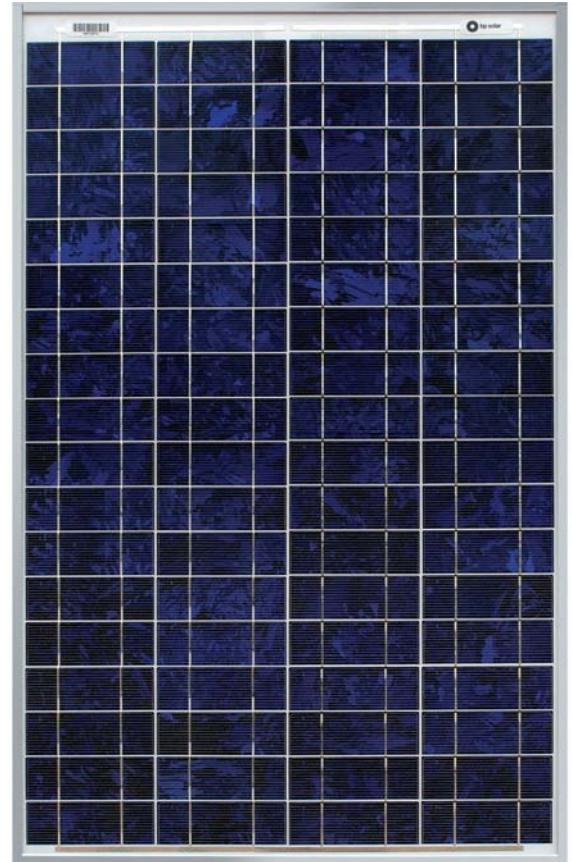
Rated power ( $P_{max}$ )	50W
Power tolerance	$\pm 10\%$
Nominal voltage	12V
Limited Warranty <sup>1</sup>	25 years

### Configuration

**J** Clear universal frame and standard J-Box

### Electrical Characteristics<sup>2</sup>

	<b>BP 350</b>
Maximum power ( $P_{max}$ ) <sup>3</sup>	50W
Voltage at Pmax ( $V_{mp}$ )	17.5V
Current at Pmax ( $I_{mp}$ )	2.9A
Warranted minimum $P_{max}$	45W
Short-circuit current ( $I_{sc}$ )	3.2A
Open-circuit voltage ( $V_{oc}$ )	21.8V
Temperature coefficient of $I_{sc}$	$(0.065 \pm 0.015)\% / ^\circ C$
Temperature coefficient of $V_{oc}$	$-(80 \pm 10)mV / ^\circ C$
Temperature coefficient of power	$-(0.5 \pm 0.05)\% / ^\circ C$
NOCT (Air 20°C; Sun 0.8kW/m <sup>2</sup> ; wind 1 <sup>m</sup> /s)	47 $\pm$ 2°C
Maximum series fuse rating	20A
Maximum system voltage	50V (U.S. NEC rating)



### Mechanical Characteristics

Dimensions	Length: 839mm (33")    Width: 537mm (21.1")    Depth: 50mm (1.97")
Weight	6.0 kg (13.2 pounds)
Solar Cells	72 cells (42mm x 125mm) in a 4x18 matrix connected in 2 parallel strings of 36 in series
Junction Box	J-Version junction box with 4-terminal connection block; IP 65, accepts PG 13.5, M20, ½ inch conduit, or cable fittings accepting 6-12mm diameter cable. Terminals accept 2.5 to 10mm <sup>2</sup> (8 to 14 AWG) wire.
Diodes	One 9A, 45V Schottky by-pass diode included
Construction	Front: High-transmission 3mm (1/8 <sup>th</sup> inch) tempered glass; Back: White Polyester; Encapsulant: EVA
Frame	Clear anodized aluminum alloy type 6063T6 Universal frame; Color: silver

1. Module Warranty: 25-year limited warranty of 85% power output; 12-year limited warranty of 93% power output; 5-year limited warranty of materials and workmanship. See your local representative for full terms of these warranties.
2. This data represents the performance of typical BP modules, and are based on measurements made in accordance with ASTM E1036 corrected to SRC (STC.)
3. During the stabilization process that occurs during the first few months of deployment, module power may decrease by approx. 1% from typical  $P_{max}$ .

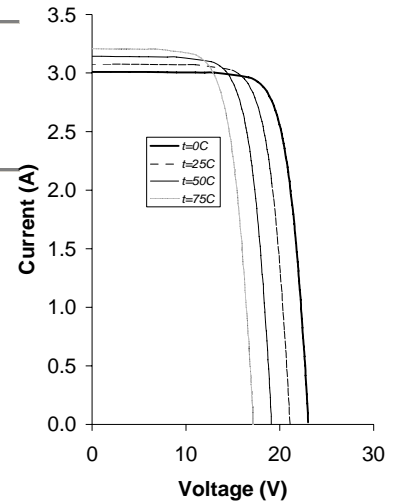
## Quality and Safety



Listed to UL 1703 Standard for safety by Intertek ETL (Class C fire rating)

Approved by Intertek ETL for use in NEC Class 1, Division 2, Groups A to D hazardous locations.

## BP350 I-V Curves

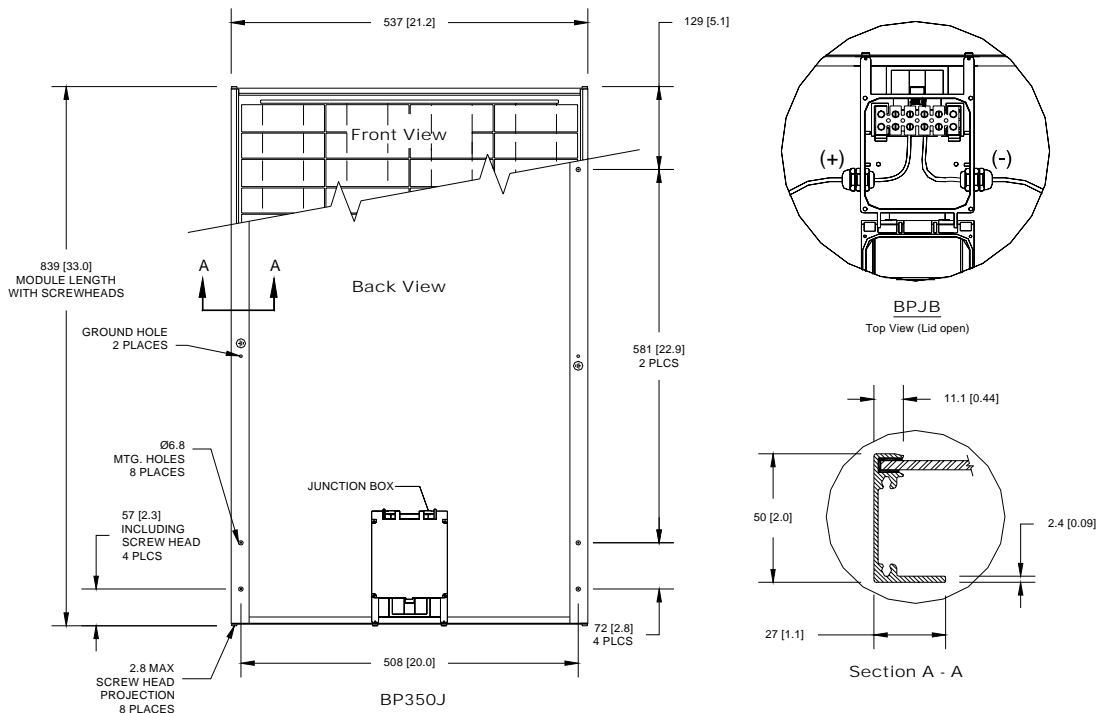


## Qualification Test Parameters

Temperature cycling range	-40°C to +85°C (-40°F to 185°F)
Humidity freeze, damp heat	85% RH
Static load front and back (e.g. wind)	50psf (2400 pascals)
Front loading (e.g. snow)	113psf (5400 pascals)
Hailstone impact	25mm (1 inch) at 23 m/s (52mph)

## Module Diagram

Dimensions in brackets are in inches. Un-bracketed dimensions are in millimeters.  
Overall tolerances  $\pm 3\text{mm}$  (1/8")



Included with each module: self-tapping grounding screw, instruction sheet, and warranty document.

**Note:** This publication summarizes product warranty and specifications, which are subject to change without notice.  
Additional information may be found on our web site: [www.bpsolar.com](http://www.bpsolar.com)

