

# REC TWINPEAK BLK SERIES

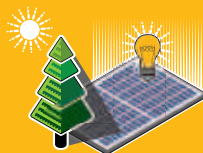
## PREMIUM SOLAR PANELS WITH SUPERIOR PERFORMANCE

REC TwinPeak BLK Series solar panels feature an innovative design with high panel efficiency and power output, enabling customers to get the most out of the space used for the installation.

Combined with industry-leading product quality and the reliability of a strong and established European brand, REC TwinPeak BLK panels are ideal for residential and commercial rooftops worldwide.



**MORE POWER  
OUTPUT PER M<sup>2</sup>**



**HIGHER  
ENERGY YIELD**

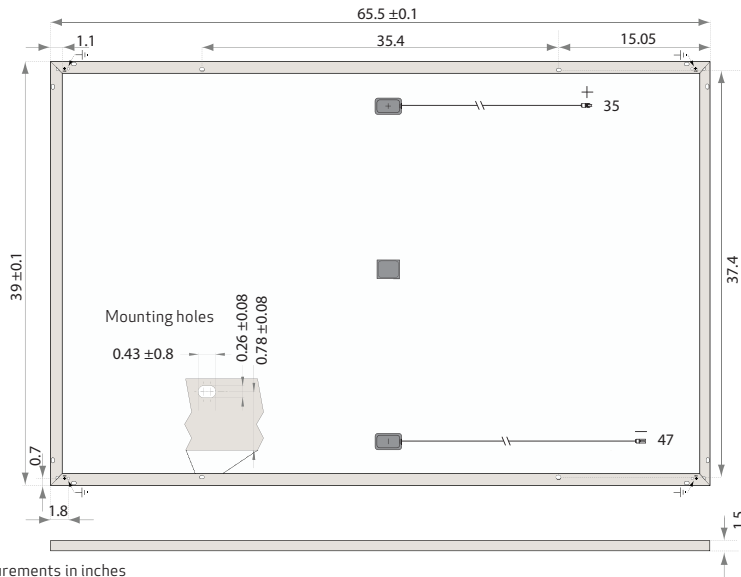


**100%  
PID FREE**



**REDUCES BALANCE OF  
SYSTEM COSTS**

# REC TWINPEAK BLK SERIES



All measurements in inches

ELECTRICAL DATA @ STC	REC265TP BLK	REC270TP BLK	REC275TP BLK
Nominal Power - $P_{MPP}$ (Wp)	265	270	275
Watt Class Sorting - (W)	0/+5	0/+5	0/+5
Nominal Power Voltage - $V_{MPP}$ (V)	30.9	31.2	31.5
Nominal Power Current - $I_{MPP}$ (A)	8.59	8.67	8.74
Open Circuit Voltage - $V_{OC}$ (V)	37.7	38.0	38.3
Short Circuit Current - $I_{SC}$ (A)	9.21	9.29	9.38
Panel Efficiency (%)	16.1	16.4	16.7

Analysed data demonstrates that 99.7% of panels produced have current and voltage tolerance of  $\pm 3\%$  from nominal values. Values at standard test conditions STC (airmass AM 1.5, irradiance 1000 W/m<sup>2</sup>, cell temperature 25°C). At low irradiance of 200 W/m<sup>2</sup> (AM 1.5 and cell temperature 25°C) at least 94% of the STC panel efficiency will be achieved.

ELECTRICAL DATA @ NOCT	REC265TP BLK	REC270TP BLK	REC275TP BLK
Nominal Power - $P_{MPP}$ (Wp)	202	207	210
Nominal Power Voltage - $V_{MPP}$ (V)	29.4	29.7	29.9
Nominal Power Current - $I_{MPP}$ (A)	6.9	6.96	7.02
Open Circuit Voltage - $V_{OC}$ (V)	36.0	36.3	37.0
Short Circuit Current - $I_{SC}$ (A)	7.3	7.37	7.43

Nominal operating cell temperature NOCT (800 W/m<sup>2</sup>, AM 1.5, windspeed 1 m/s, ambient temperature 20°C).

## CERTIFICATION



UL 1703, - Fire classification Type 2  
IEC 61215, IEC 61730;  
IEC 61701 (Salt Mist - severity level 1)

## WARRANTY

10 year product warranty.  
25 year linear power output warranty  
(max. degradation in performance of 0.7% p.a.).

16.7% EFFICIENCY  
10 YEAR PRODUCT WARRANTY  
25 YEAR LINEAR POWER OUTPUT WARRANTY

DUTY★FREE

US IMPORT DUTY FREE

## TEMPERATURE RATINGS

Nominal Operating Cell Temperature (NOCT)	44.6°C ( $\pm 2^\circ\text{C}$ )
Temperature Coefficient of $P_{MPP}$	-0.39 %/°C
Temperature Coefficient of $V_{OC}$	-0.31 %/°C
Temperature Coefficient of $I_{SC}$	0.045 %/°C

## GENERAL DATA

Cell type:	120 REC HC multi-crystalline 6 strings of 20 cells (6" x 3")
Glass:	1/8" mm solar glass with anti-reflective surface treatment
Back sheet:	Double layer highly resistant polyester (white)
Frame:	Anodized aluminum (black)
Junction box:	3-part with bypass diodes IP67 rated 4 mm <sup>2</sup> solar cable, 35" + 47"
Connectors:	Multi-Contact MC4 (4 mm <sup>2</sup> )
Origin:	Made in Singapore

## MAXIMUM RATINGS

Operational Temperature:	-40 ... +85°C
Maximum System Voltage:	1000 V
Design Load*:	75.2 lbs/ft <sup>2</sup> (3600 Pa) 33.4 lbs/ft <sup>2</sup> (1600 Pa) *Refer to installation manual
Max Series Fuse Rating:	15 A
Max Reverse Current:	15 A

## MECHANICAL DATA

Dimensions:	65 1/2 x 39 x 1 1/2 in
Area:	17 3/4 ft <sup>2</sup>
Weight:	39 1/2 lbs

**Note!** All given specifications are subject to change without notice at any time.

REC is a leading global provider of solar energy solutions. With more than 15 years of experience, we offer sustainable, high performing products, services and investments for the solar industry. Together with our partners, we create value by providing solutions that better meet the world's growing energy needs. REC is headquartered in Norway and listed on the Oslo Stock Exchange (ticker: RECSOL). Our 1,800 employees worldwide generated revenues of USD 680 million in 2014.



www.recgroup.com